

**Austin-Bergstrom International Airport
Aviation Activity Report
Calendar Year 2021 vs 2020**

Combined Terminals

	3/2021	3/2020	Percent Change	1/2021 - 3/2021	1/2020 - 3/2020	Percent Change
ABIA						
Total Passenger Activity						
Domestic Enplaned Revenue	334,854	311,943	7.34%	682,822	1,457,373	-53.15%
Domestic Deplaned Revenue	345,535	312,765	10.48%	701,326	1,483,089	-52.71%
International Enplaned Revenue	3,046	7,913	-61.51%	4,197	30,817	-86.38%
International Deplaned Revenue	3,117	9,364	-66.71%	4,651	34,001	-86.32%
Domestic Enplaned Non-Revenue	9,020	11,945	-24.49%	21,426	39,733	-46.08%
Domestic Deplaned Non-Revenue	8,861	11,186	-20.78%	20,975	37,079	-43.43%
International Enplaned Non-Revenue	17	198	-91.41%	44	481	-90.85%
International Deplaned Non-Revenue	7	159	-95.60%	17	409	-95.84%
Intl Enplaned Pre-Cleared Revenue	0	1,218	-100.00%	0	5,483	-100.00%
Intl Deplaned Pre-Cleared Revenue	0	737	-100.00%	0	4,626	-100.00%
Intl Enplaned Pre-Cleared Non-Revenue	0	26	-100.00%	0	108	-100.00%
Intl Deplaned Pre-Cleared Non-Revenue	0	14	-100.00%	0	100	-100.00%
South Terminal Domestic Enplaned Revenue	15,099	16,123	-6.35%	28,861	64,686	-55.38%
South Terminal Domestic Deplaned Revenue	15,610	16,898	-7.62%	29,558	68,025	-56.55%
South Terminal Domestic Enplaned Non-Revenue	49	91	-46.15%	122	299	-59.20%
South Terminal Domestic Deplaned Non-Revenue	55	75	-26.67%	123	288	-57.29%
ABIA Passenger Totals	735,270	700,655	4.94%	1,494,122	3,226,597	-53.69%
<i>ABIA Enplaned Passenger Totals</i>	<i>362,085</i>	<i>349,457</i>	<i>3.61%</i>	<i>737,472</i>	<i>1,598,980</i>	<i>-53.88%</i>
<i>ABIA Deplaned Passenger Totals</i>	<i>373,185</i>	<i>351,198</i>	<i>6.26%</i>	<i>756,650</i>	<i>1,627,617</i>	<i>-53.51%</i>
<i>ABIA Domestic Passenger Totals</i>	<i>729,083</i>	<i>681,026</i>	<i>7.06%</i>	<i>1,485,213</i>	<i>3,150,572</i>	<i>-52.86%</i>
<i>ABIA International Passenger Totals</i>	<i>6,187</i>	<i>19,629</i>	<i>-68.48%</i>	<i>8,909</i>	<i>76,025</i>	<i>-88.28%</i>

CURRENT PASSENGER RECORD = 1,643,016 RECORD SET = JULY 2019

Total Aircraft Operations

Air Carrier	7,876	10,329	-23.75%	17,600	32,242	-45.41%
Commuter & Air Taxi	1,953	1,049	86.18%	4,606	3,567	29.13%
Military	496	392	26.53%	1,279	1,256	1.83%
General Aviation						
Itinerant	4,029	2,215	81.90%	9,399	8,753	7.38%
Local	0	4	-100.00%	20	88	-77.27%
Total G.A.	4,029	2,219	81.57%	9,419	8,841	6.54%
Total Operations	14,354	13,989	2.61%	32,904	45,906	-28.32%

**Austin-Bergstrom International Airport
Aviation Activity Report
Calendar Year 2021 vs 2020**

By Terminal

	3/2021	3/2020	Percent Change	1/2021 - 3/2021	1/2020 - 3/2020	Percent Change
<u>Barbara Jordan Terminal (BJT)</u>						
Passenger Activity						
Domestic Enplaned Revenue	334,854	311,943	7.34%	682,822	1,457,373	-53.15%
Domestic Deplaned Revenue	345,535	312,765	-61.51%	701,326	1,483,089	-86.38%
International Enplaned Revenue	3,046	7,913	-66.71%	4,197	30,817	-86.32%
International Deplaned Revenue	3,117	9,364	-66.71%	4,651	34,001	-86.32%
Domestic Enplaned Non-Revenue	9,020	11,945	-24.49%	21,426	39,733	-46.08%
Domestic Deplaned Non-Revenue	8,861	11,186	-20.78%	20,975	37,079	-43.43%
International Enplaned Non-Revenue	17	198	-91.41%	44	481	-90.85%
International Deplaned Non-Revenue	7	159	-95.60%	17	409	-95.84%
Intl Enplaned Pre-Cleared Revenue	0	1,218	-100.00%	0	5,483	-100.00%
Intl Deplaned Pre-Cleared Revenue	0	737	-100.00%	0	4,626	-100.00%
Intl Enplaned Pre-Cleared Non-Revenue	0	26	-100.00%	0	108	-100.00%
Intl Deplaned Pre-Cleared Non-Revenue	0	14	-100.00%	0	100	-100.00%
Barbara Jordan Terminal Passenger Totals	704,457	667,468	5.54%	1,435,458	3,093,299	-53.59%
<i>BJT Enplaned Passenger Totals</i>	<i>346,937</i>	<i>333,243</i>	<i>4.11%</i>	<i>708,489</i>	<i>1,533,995</i>	<i>-53.81%</i>
<i>BJT Deplaned Passenger Totals</i>	<i>357,520</i>	<i>334,225</i>	<i>6.97%</i>	<i>726,969</i>	<i>1,559,304</i>	<i>-53.38%</i>
<i>BJT Domestic Passenger Totals</i>	<i>698,270</i>	<i>647,839</i>	<i>7.78%</i>	<i>1,426,549</i>	<i>3,017,274</i>	<i>-52.72%</i>
<i>BJT International Passenger Totals</i>	<i>6,187</i>	<i>19,629</i>	<i>-68.48%</i>	<i>8,909</i>	<i>76,025</i>	<i>-88.28%</i>
<u>South Terminal (ST)</u>						
Passenger Activity						
South Terminal Domestic Enplaned Revenue	15,099	16,123	-6.35%	28,861	64,686	-55.38%
South Terminal Domestic Deplaned Revenue	15,610	16,898	-7.62%	29,558	68,025	-56.55%
South Terminal Domestic Enplaned Non-Revenue	49	91	-46.15%	122	299	-59.20%
South Terminal Domestic Deplaned Non-Revenue	55	75	-26.67%	123	288	-57.29%
South Terminal Passenger Totals	30,813	33,187	-7.15%	58,664	133,298	-55.99%
<i>ST Enplaned Passenger Totals</i>	<i>15,148</i>	<i>16,214</i>	<i>-6.57%</i>	<i>28,983</i>	<i>64,985</i>	<i>-55.40%</i>
<i>ST Deplaned Passenger Totals</i>	<i>15,665</i>	<i>16,973</i>	<i>-7.71%</i>	<i>29,681</i>	<i>68,313</i>	<i>-56.55%</i>

**Austin-Bergstrom International Airport
Aviation Activity Report
Calendar Year 2021 vs 2020**

	3/2021	3/2020	Percent Change	1/2021 - 3/2021	1/2020 - 3/2020	Percent Change
<u>Total Cargo Activity</u>						
Mail						
Domestic Enplaned Mail	153,532	224,273	-31.54%	412,540	759,057	-45.65%
Domestic Deplaned Mail	444,955	573,266	-22.38%	1,258,893	2,071,623	-39.23%
International Enplaned Mail	0	0	0.00%	0	0	0.00%
International Deplaned Mail	0	0	0.00%	0	0	0.00%
South Terminal-Domestic Enplaned Mail	0	0	0.00%	0	0	0.00%
South Terminal-Domestic Deplaned Mail	0	0	0.00%	0	0	0.00%
Mail Totals	598,487	797,539	-24.96%	1,671,433	2,830,680	-40.95%
Cargo						
Domestic Enplaned Cargo	7,821,393	4,742,209	64.93%	22,120,881	14,346,691	54.19%
Domestic Deplaned Cargo	9,678,999	7,546,086	28.27%	25,620,338	21,111,120	21.36%
International Enplaned Cargo	24,638	271,665	-90.93%	59,590	767,277	-92.23%
International Deplaned Cargo	1,890	138,578	-98.64%	14,620	411,311	-96.45%
South Terminal-Domestic Enplaned Cargo	0	0	0.00%	0	0	0.00%
South Terminal-Domestic Deplaned Cargo	0	0	0.00%	0	0	0.00%
Cargo Totals	17,526,920	12,698,538	38.02%	47,815,429	36,636,399	30.51%
Belly Freight						
Domestic Enplaned Belly Freight	201,308	232,930	-13.58%	441,458	715,294	-38.28%
Domestic Deplaned Belly Freight	437,570	379,628	15.26%	1,005,292	1,330,461	-24.44%
International Enplaned Belly Freight	0	235,880	-100.00%	0	1,033,720	-100.00%
International Deplaned Belly Freight	0	583,655	-100.00%	0	2,056,175	-100.00%
South Terminal-Domestic Enplaned Belly Frght	0	0	0.00%	0	0	0.00%
South Terminal-Domestic Deplaned Belly Frght	0	0	0.00%	0	0	0.00%
Belly Freight Totals	638,878	1,432,093	-55.39%	1,446,750	5,135,650	-71.83%
Cargo Totals (Mail, Cargo, Belly Freight)	18,764,285	14,928,170	25.70%	50,933,612	44,602,729	14.19%
<i>Enplaned Cargo Totals</i>	<i>8,200,871</i>	<i>5,706,957</i>	<i>43.70%</i>	<i>23,034,469</i>	<i>17,622,039</i>	<i>30.71%</i>
<i>Deplaned Cargo Totals</i>	<i>10,563,414</i>	<i>9,221,213</i>	<i>14.56%</i>	<i>27,899,143</i>	<i>26,980,690</i>	<i>3.40%</i>
<i>Domestic Cargo Totals</i>	<i>18,737,757</i>	<i>13,698,392</i>	<i>36.79%</i>	<i>50,859,402</i>	<i>40,334,246</i>	<i>26.09%</i>
<i>International Cargo Totals</i>	<i>26,528</i>	<i>1,229,778</i>	<i>-97.84%</i>	<i>74,210</i>	<i>4,268,483</i>	<i>-98.26%</i>

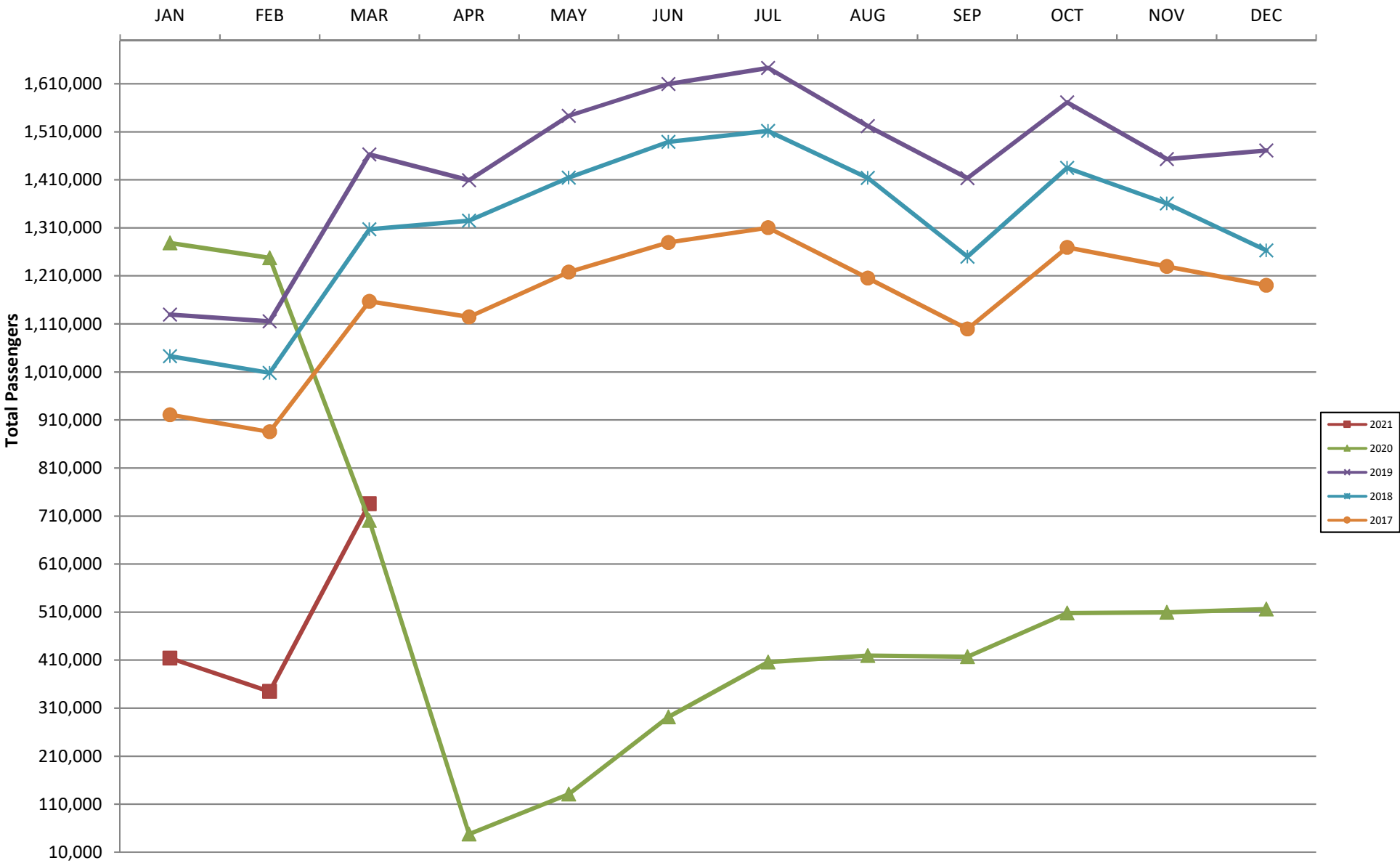
CURRENT CARGO RECORD = 40,215,518

RECORD SET = MARCH 2001

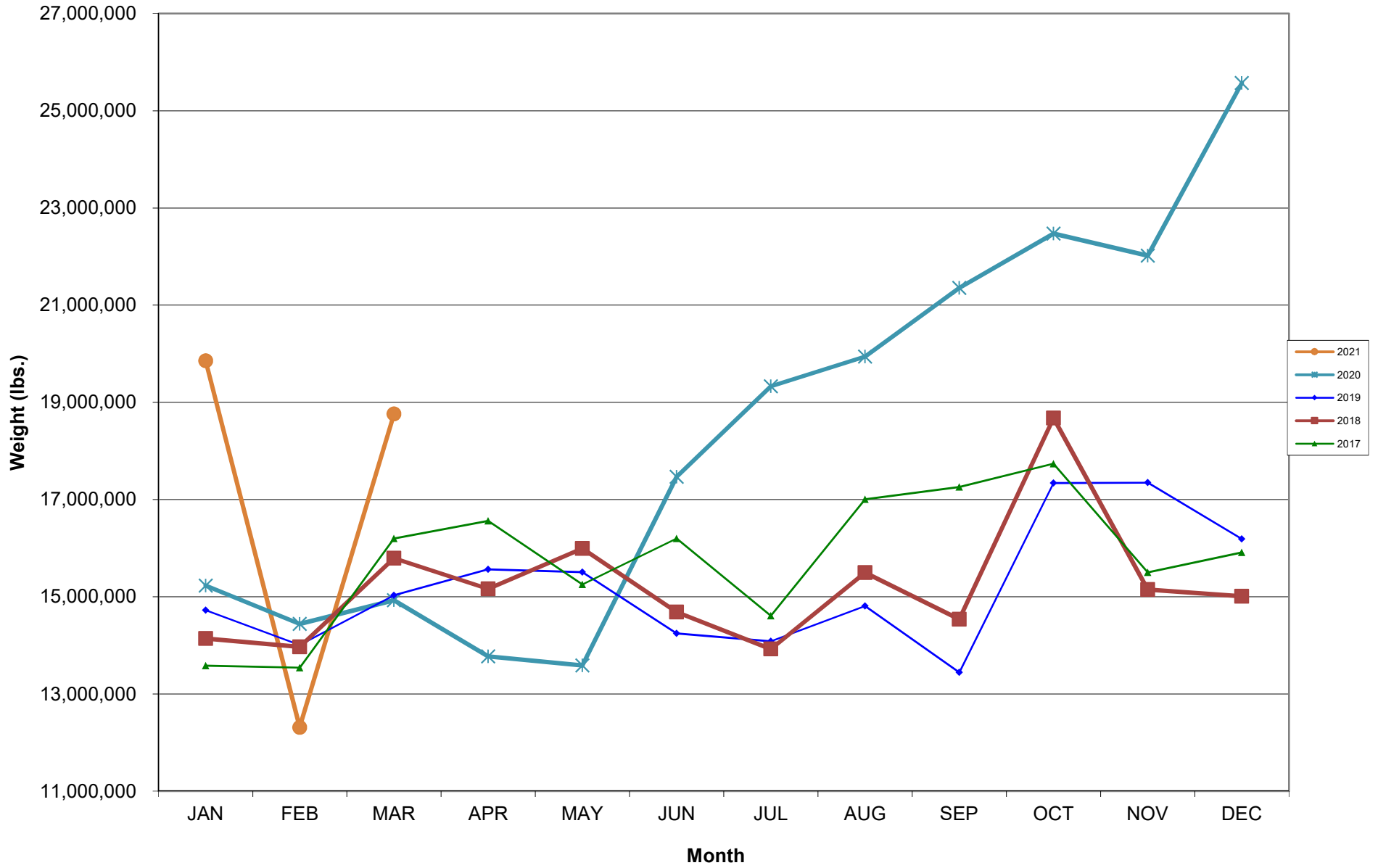
AUS – Airline Codes
March 2021

<u>Code</u>	<u>Carrier</u>
AS	Alaska Airlines, Inc.
G4	Allegiant Air, LLC
AA	American Airlines, Inc.
DL	Delta Air Lines
F9	Frontier Airlines, Inc.
B6	JetBlue Airways Corp.
WN	Southwest Airlines
NK	Spirit Airlines, Inc.
SY	Sun Country Airlines/MN Airlines LLC
WQ	Swift Air LLC
UA	United Airlines, Inc.

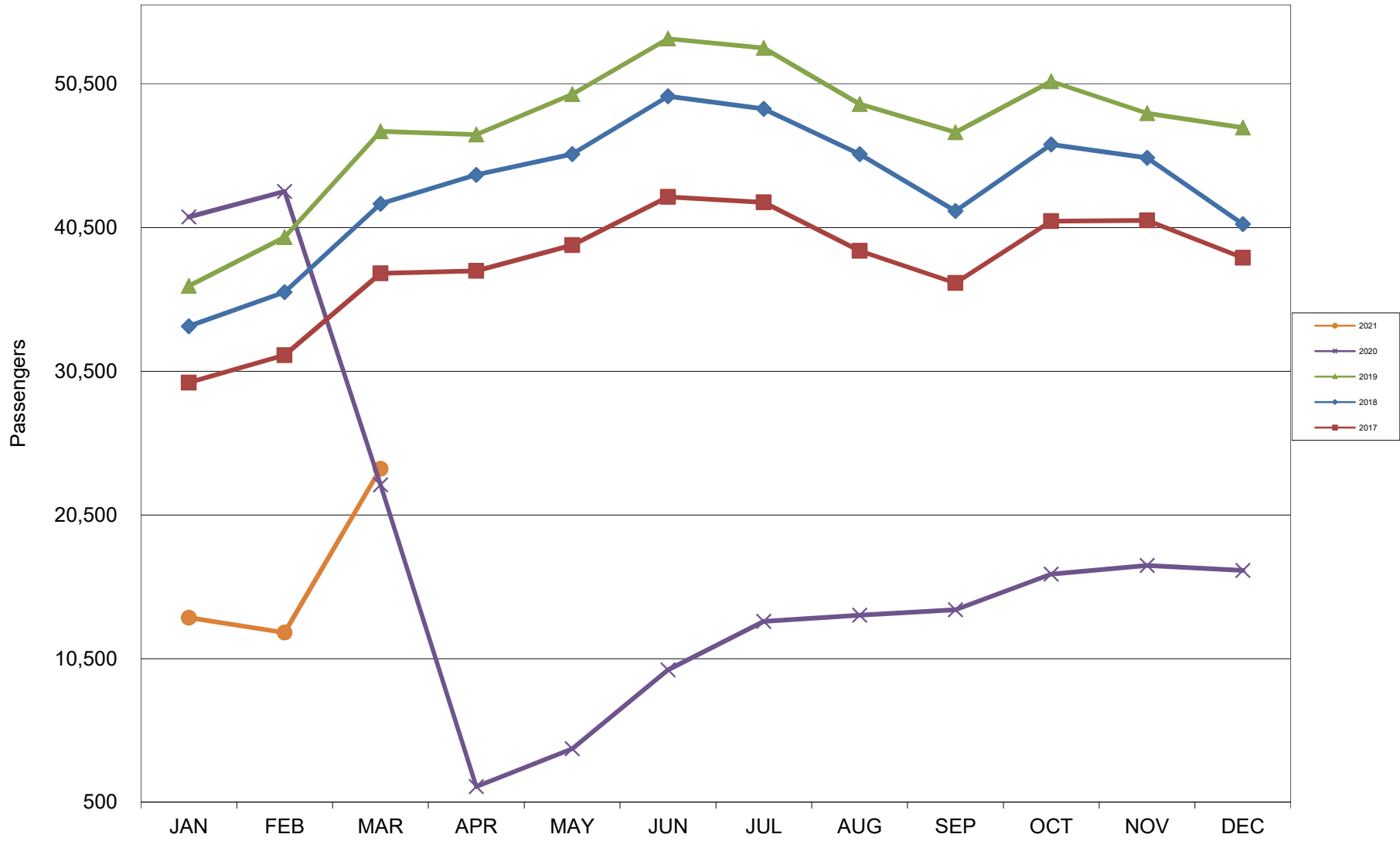
AUSTIN PASSENGER TRAFFIC 5 Year Trend



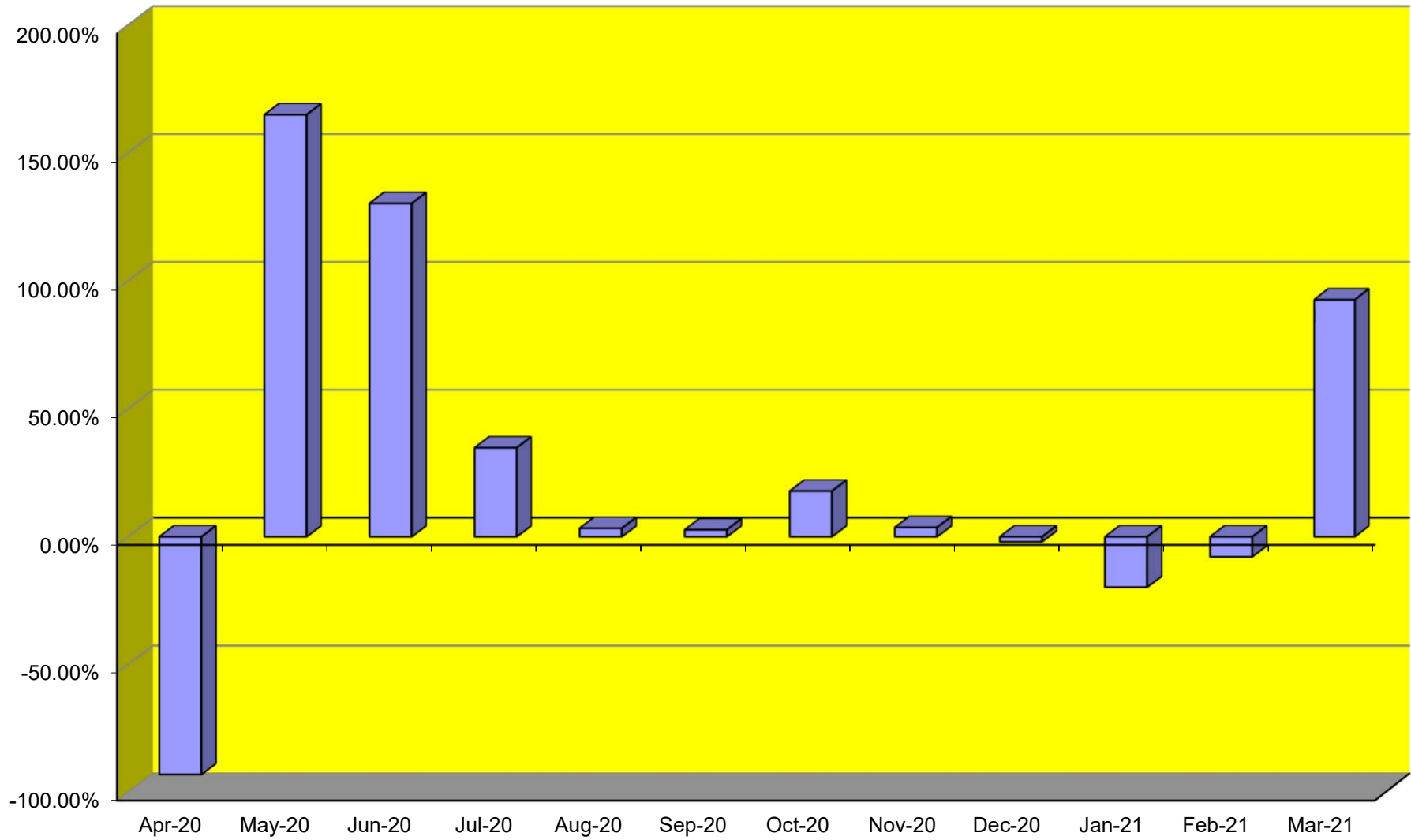
TOTAL CARGO POUNDAGE - AUSTIN, TEXAS



Average Daily Passengers



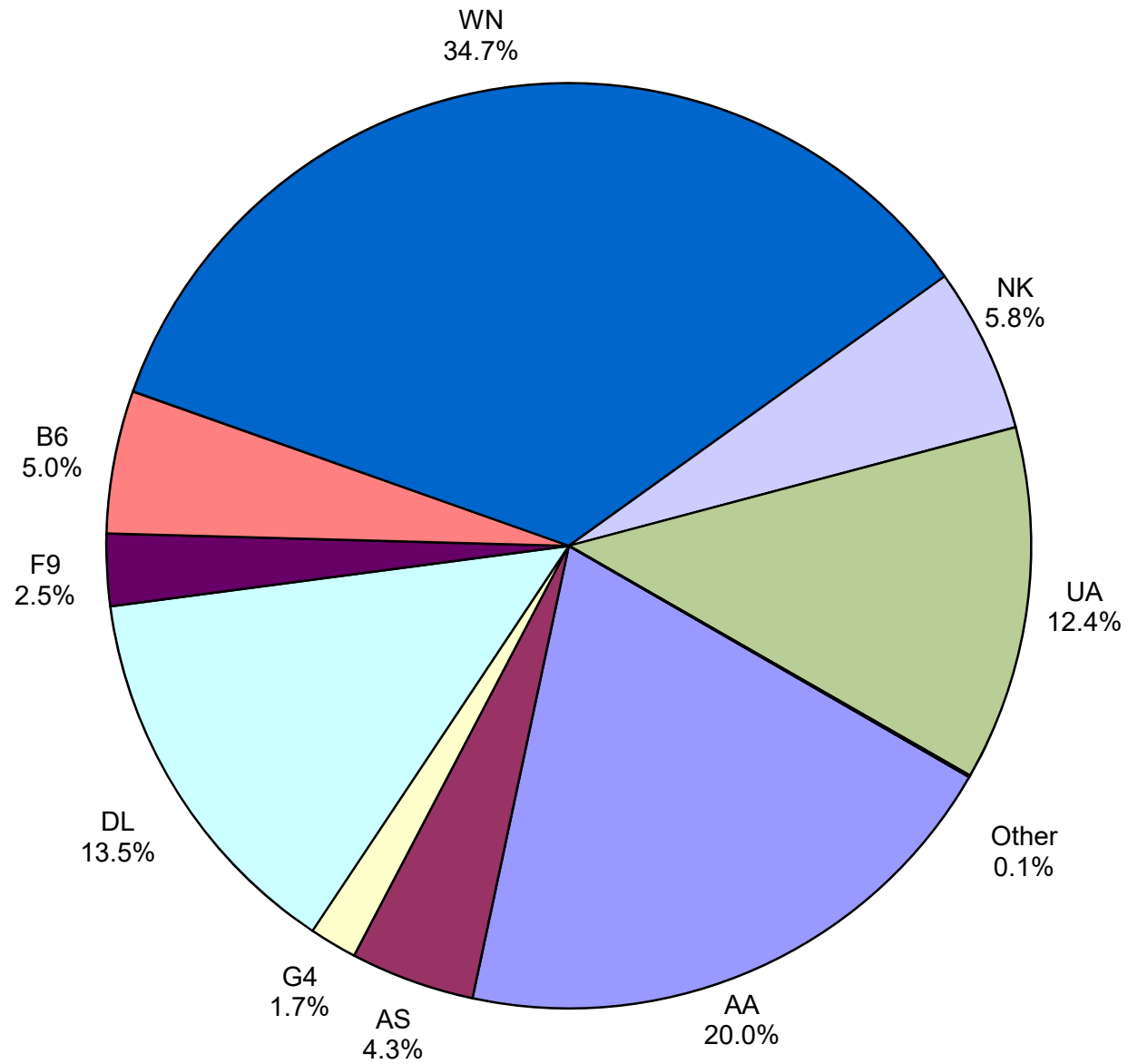
Monthly % Change in Average Daily Passengers



HISTORY OF INTERNATIONAL AIR CARGO



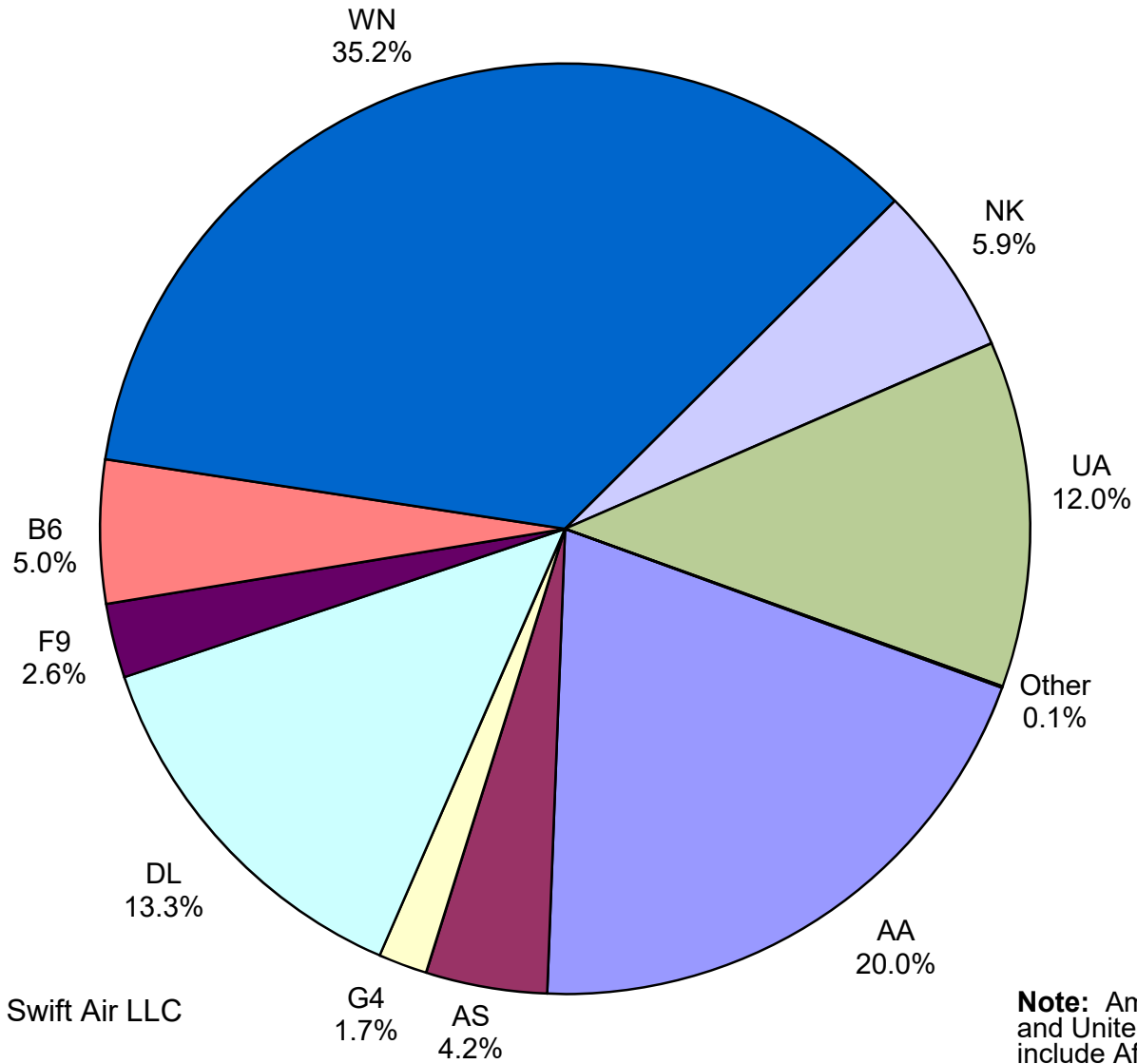
**Total Passengers
March 2021**



Other: Sun Country and Swift Air LLC

Note: American, Delta and United Airlines percentages include Affiliates.

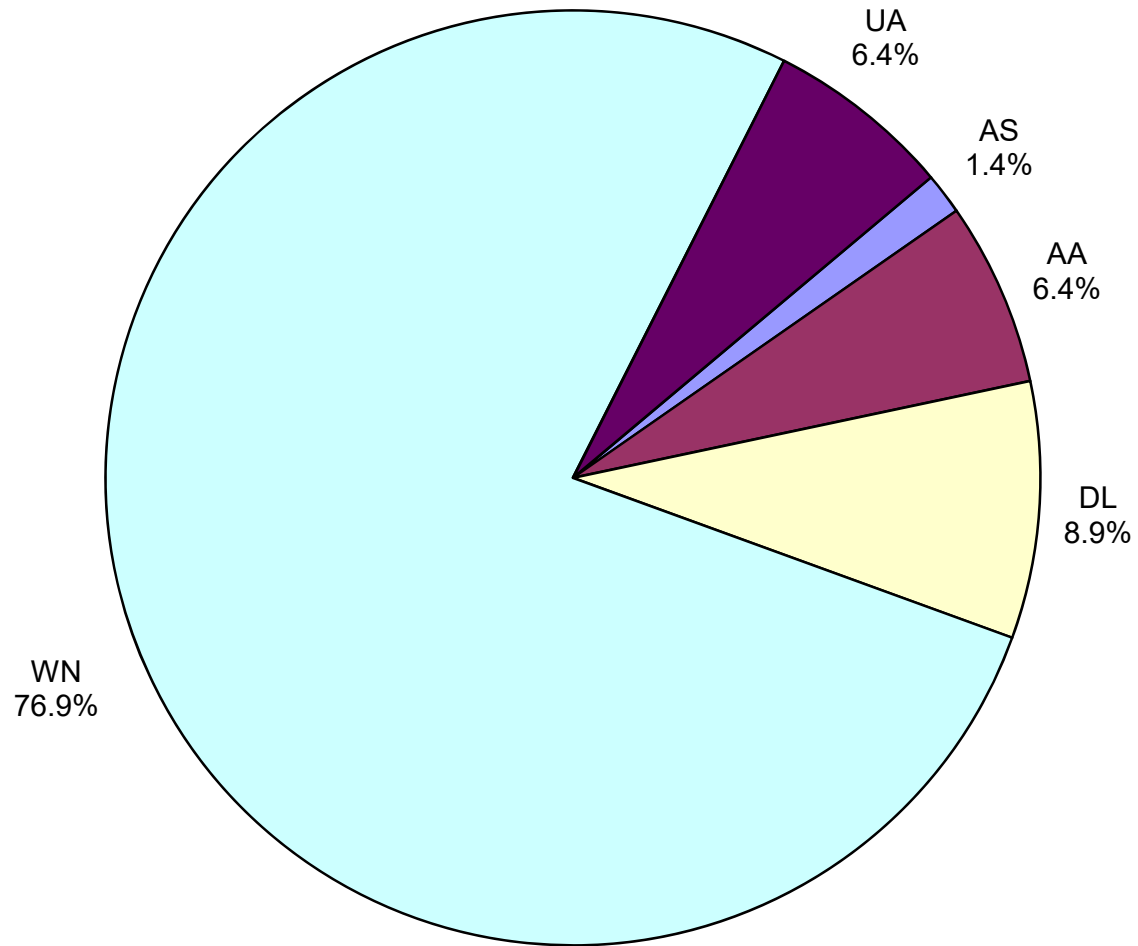
**All Passenger Carriers
Enplaned Revenue Passengers
March 2021**



Other: Sun Country and Swift Air LLC

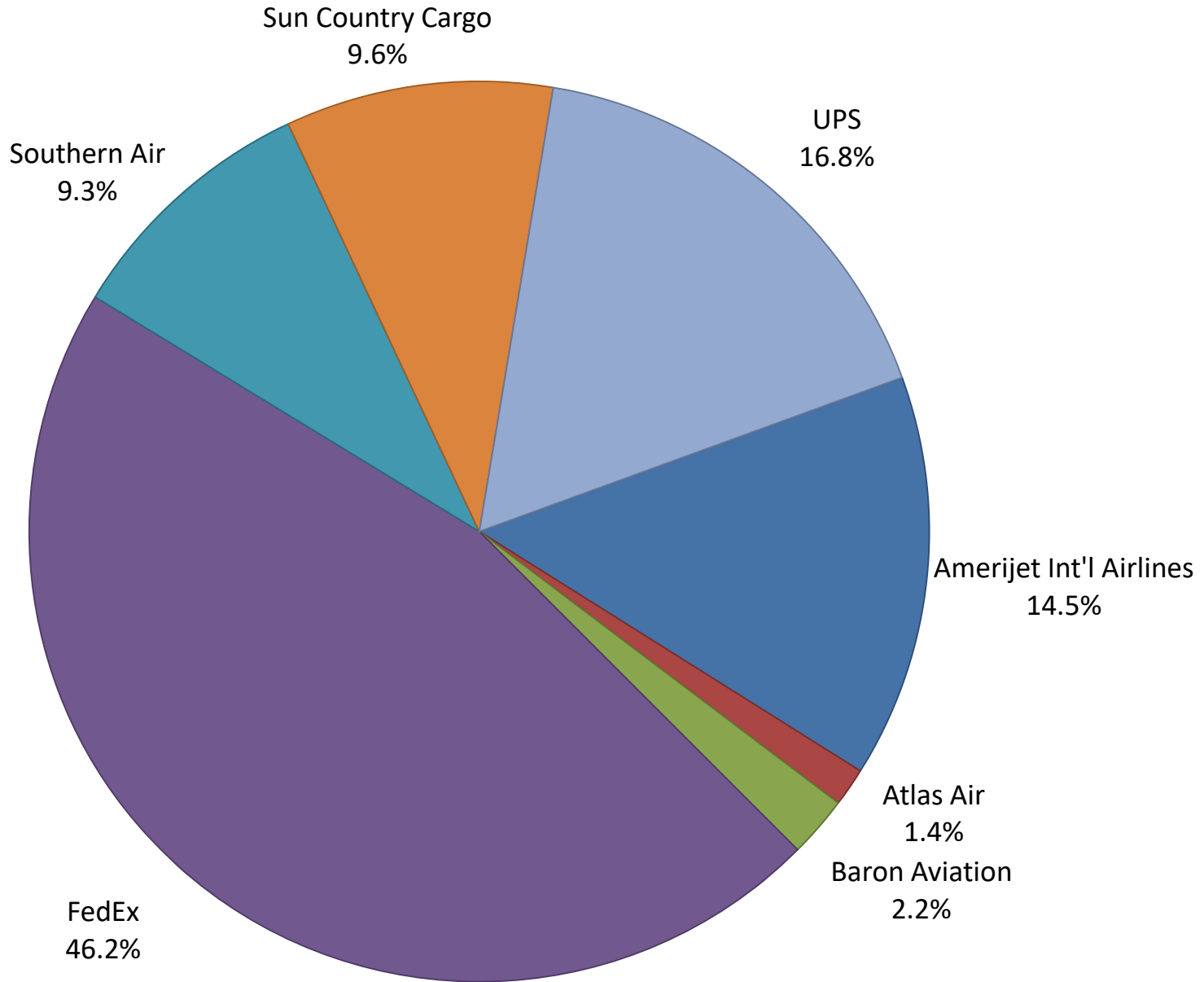
Note: American/US Airways, Delta and United Airlines percentages include Affiliates.

**AUS Belly Freight Market Shares
March 2021**



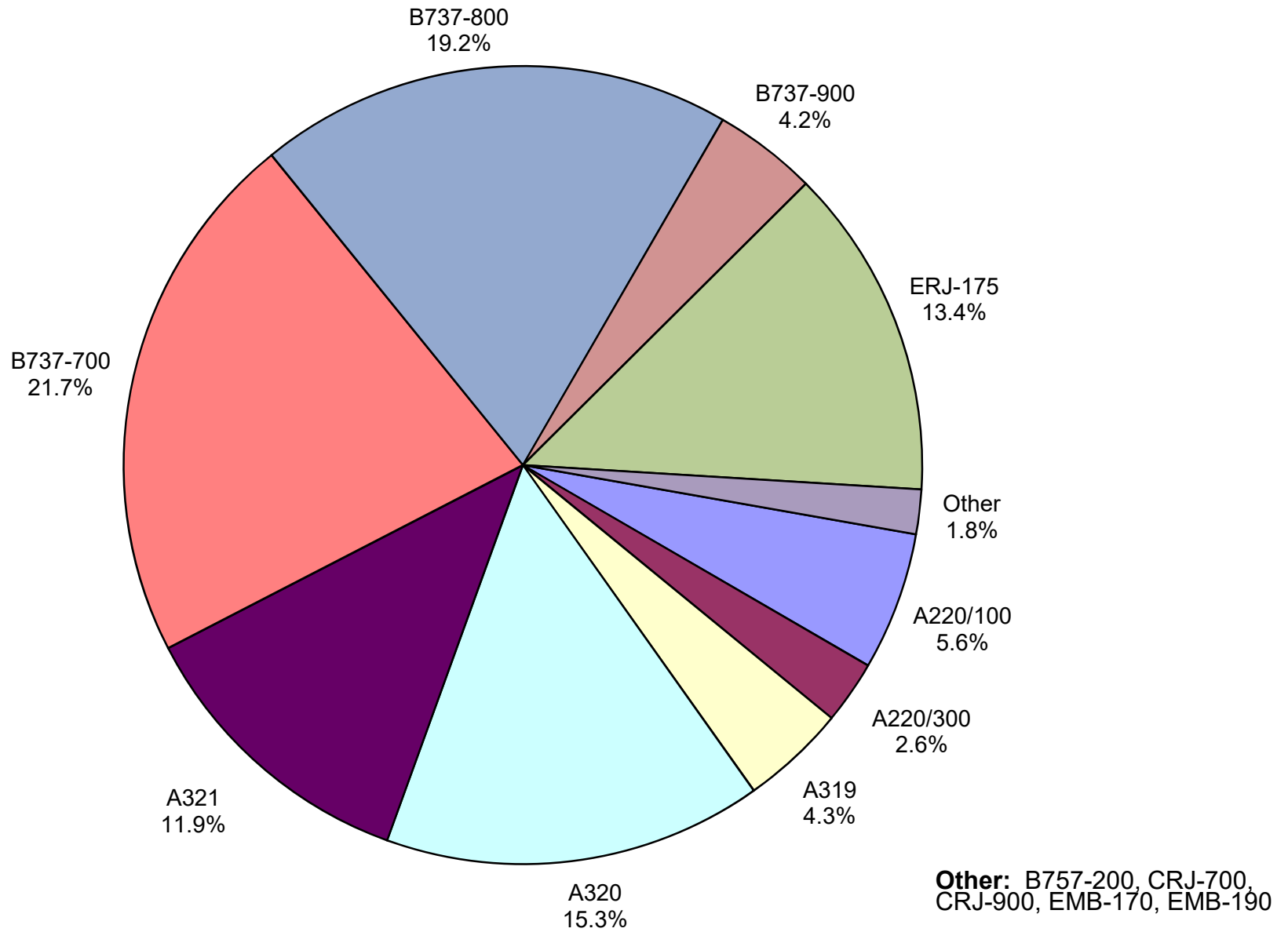
Other =

Air Cargo Market Share March 2021

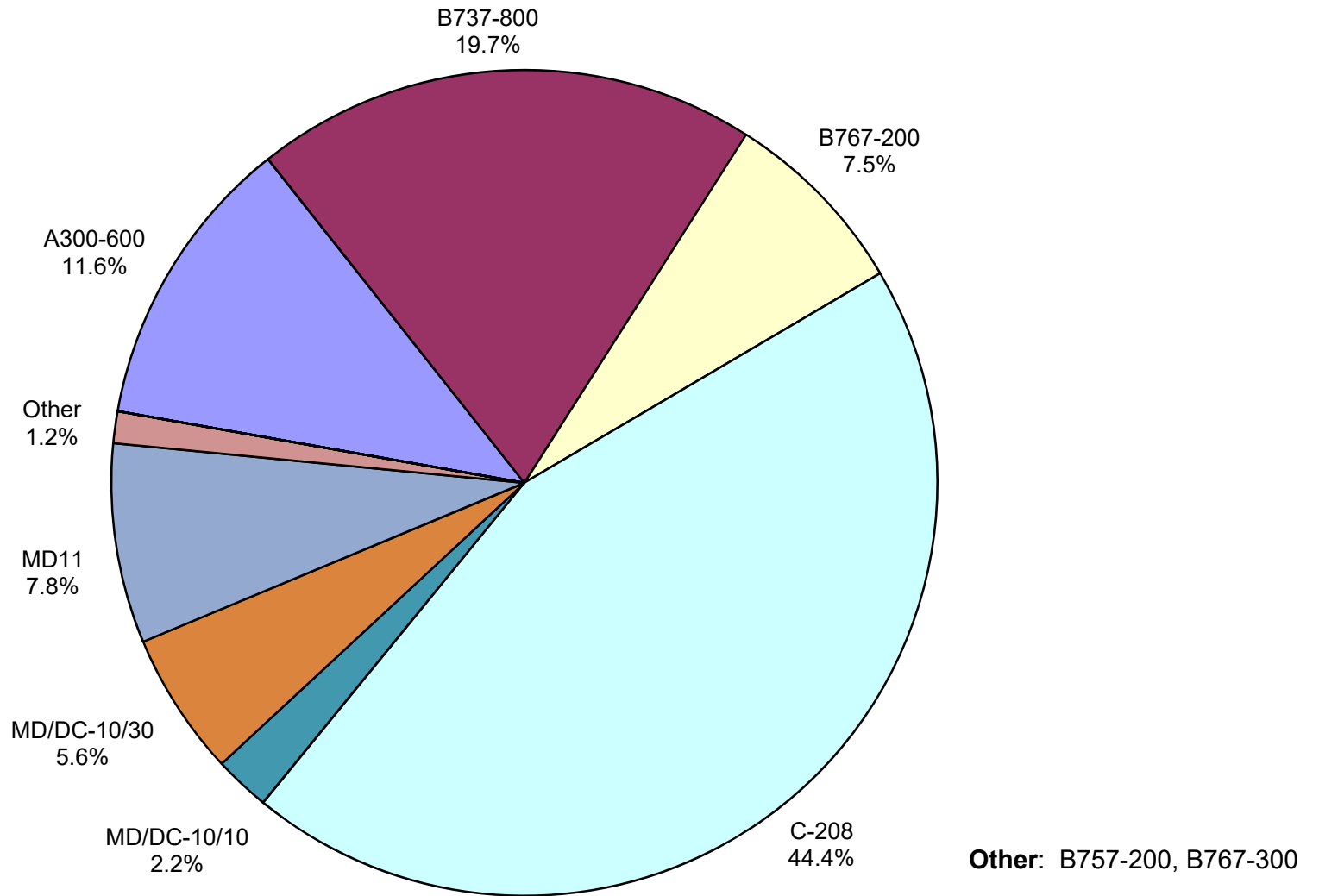


Other:

**AUS Scheduled Passenger Aircraft Fleet Mix
March 2021**



**AUS Scheduled Cargo Aircraft Fleet Mix
March 2021**



Austin-Bergstrom International Airport

Pax Detail Report - March, 2021

Company	Period				YTD				2021 Share	2020 Share	Share Diff
	3/2021	3/2020	Difference	Change	YTD 2021	YTD 2020	Difference	Change			
Aeroenlaces Nacionales, SA DE CV	0	197	-197	-100.0	0	197	-197	-100.0	0.0	0.0	0.0
Aerovias de Mexico S.A. de C.V. Pre Bankruptcy	0	2,319	-2,319	-100.0	0	9,915	-9,915	-100.0	0.0	0.3	-0.3
Air Canada	0	1,995	-1,995	-100.0	0	10,317	-10,317	-100.0	0.0	0.3	-0.3
Alaska Airlines INC	31,929	24,156	7,773	32.2	59,802	117,280	-57,478	-49.0	4.0	3.6	0.4
Allegiant Air LLC	12,293	6,844	5,449	79.6	17,451	18,475	-1,024	-5.5	1.2	0.6	0.6
American Airlines INC	147,085	130,012	17,073	13.1	303,297	612,411	-309,114	-50.5	20.3	19.0	1.3
British Airways PLC	0	5,145	-5,145	-100.0	0	29,217	-29,217	-100.0	0.0	0.9	-0.9
Delta Air Lines	99,685	92,648	7,037	7.6	204,345	462,967	-258,622	-55.9	13.7	14.3	-0.6
Deutsche Lufthansa AG	0	2,246	-2,246	-100.0	0	15,883	-15,883	-100.0	0.0	0.5	-0.5
Frontier Airlines INC	18,520	26,343	-7,823	-29.7	41,213	114,823	-73,610	-64.1	2.8	3.6	-0.8
JetBlue Airways Corporation	36,675	26,139	10,536	40.3	71,714	119,897	-48,183	-40.2	4.8	3.7	1.1
Miami Air International INC Pre Bankruptcy	0	121	-121	-100.0	0	121	-121	-100.0	0.0	0.0	0.0
Norwegian Air UK LTD	0	2,327	-2,327	-100.0	0	3,474	-3,474	-100.0	0.0	0.1	-0.1
Southwest Airlines	255,034	220,640	34,394	15.6	496,543	1,032,730	-536,187	-51.9	33.2	32.0	1.2
Spirit Airlines Inc	42,424	56,414	-13,990	-24.8	91,258	206,322	-115,064	-55.8	6.1	6.4	-0.3
Sun Country Airlines/MN Airlines LLC	211	372	-161	-43.3	282	643	-361	-56.1	0.0	0.0	0.0
Swift Air LLC	202	0	202	0.0	499	928	-429	-46.2	0.0	0.0	0.0
United Airlines INC	91,212	102,737	-11,525	-11.2	207,718	470,997	-263,279	-55.9	13.9	14.6	-0.7
Report Totals	735,270	700,655	34,615	4.94%	1,494,122	3,226,597	-1,732,475	-53.69%	100.0%	99.9%	

Statistics Included in Report

Domestic Passengers: Enplaned Revenue, Deplaned Revenue, Enplaned Non-Revenue, Deplaned Non-Revenue

International Passengers: Enplaned Revenue, Deplaned Revenue, Enplaned Non-Revenue, Deplaned Non-Revenue

International Pre-Cleared Passengers: Enplaned Revenue, Deplaned Revenue, Enplaned Non-Revenue, Deplaned Non-Revenue

South Terminal Domestic Passengers: Enplaned Revenue, Deplaned Revenue, Enplaned Non-Revenue, Deplaned Non-Revenue

Austin-Bergstrom International Airport

Summary Landings Report

Landing Type: Total

Month	2021		2020		2019		% Change 2021- 2020		% Change 2020- 2019	
	Count	Weight	Count	Weight	Count	Weight	Count	Weight	Count	Weight
January	2,839	399,216,719	5,762	812,175,948	5,348	733,746,679	-50.73%	-50.85%	7.74%	10.69%
February	2,194	303,710,832	5,382	764,833,023	5,040	692,708,930	-59.23%	-60.29%	6.79%	10.41%
March	4,076	547,982,160	5,278	742,099,772	5,964	825,483,911	-22.77%	-26.16%	-11.50%	-10.10%
April	0	0	1,884	264,508,162	5,899	815,621,798	-100.00%	-100.00%	-68.06%	-67.57%
May	0	0	1,608	223,266,578	6,294	881,747,150	-100.00%	-100.00%	-74.45%	-74.68%
June	0	0	2,119	293,669,395	6,322	890,410,020	-100.00%	-100.00%	-66.48%	-67.02%
July	0	0	3,401	458,639,882	6,551	915,103,306	-100.00%	-100.00%	-48.08%	-49.88%
August	0	0	3,390	473,872,571	6,447	906,499,773	-100.00%	-100.00%	-47.42%	-47.73%
September	0	0	2,791	378,925,681	6,020	848,899,951	-100.00%	-100.00%	-53.64%	-55.36%
October	0	0	2,972	409,225,230	6,459	916,700,076	-100.00%	-100.00%	-53.99%	-55.36%
November	0	0	3,157	438,563,290	5,924	836,527,780	-100.00%	-100.00%	-46.71%	-47.57%
December	0	0	3,126	431,926,302	6,078	848,973,148	-100.00%	-100.00%	-48.57%	-49.12%
Totals For Selected Period	9,109	1,250,909,711	16,422	2,319,108,743	16,352	2,251,939,520	-44.53%	-46.06%	0.43%	2.98%
Yearly Totals	9,109	1,250,909,711	40,870	5,691,705,834	72,346	10,112,422,522	-77.71%	-78.02%	-43.51%	-43.72%